

CHILDCARE DEPARTMENT ANNUAL REPORT

April 2023 - March 2024



Author: Childcare Managers, Jodie Wilson

Greenway Women's Group

Greenway Women's Centre, 19 Greenway, Belfast, BT6 0DT

Greenway Women's Group is a Company Limited by Guarantee No. NI381399, Inland Revenue Charity No. XR34419,

Northern Ireland Charity No. NIC100610

CHILDCARE DEPARTMENT ANNUAL REPORT

Contents

Childcare Manager Statement.....	2
Childcare Team.....	3
Wellies in the wood.....	4
Celebration day.....	5
September inductions.....	6
Halloween & Santa’s grotto.....	7
Spring daycare awards.....	8
Evidence based outcomes.....	9
Further information.....	10
Quality indicators.....	11-12
Staff training and development.....	14
Moving forward.....	13
Funders.....	14
Greenway Services.....	15

Childcare Manager Statement

This report will demonstrate the work that the childcare department has presented within the years 2023/2024, providing Day Care to children aged between 0-3 and their families.

From March 2022 we were lucky to secure a promotion to co childcare managers after spending many years working within the childcare rooms building our way up from assistants to room leaders to now being co-childcare managers. We have now completed our level 5 in management and have completed designated child protection officer training. This has been a hard but rewarding transition and we have learnt a lot.

This year we welcomed Jean Ho to our childcare team as a room leader in our toddler room 2 and we also welcomed Asha Caldwell in our toddler room as a childcare assistant.

In October 2022 we decided it was time to open a third childcare room that is allocated in our new building, this allowed us to welcome an additional 6 babies each day. We have been able to extend our opening hours from 9.30-1.30 to 8.30-1.30 and are hoping to have our childcare opened full time in the near future. We are working towards a strategic plan to open a fourth childcare room and expand our childcare services. This will create more jobs and give our staff an opportunity to gain promotion.

We will finish by saying we hope to continually develop our practice to provide the most effective, enabled and stimulating environment, building strong foundations for children to flourish.

J. Wilson

N. Horrocks

Childcare Team 2023/2024



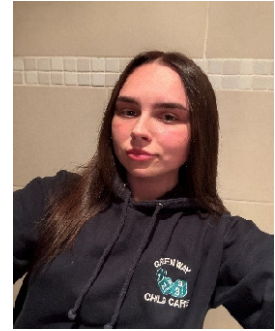
Jodie Wilson
Childcare Manager



Natalie Horrocks
Childcare Manager



Lynsey Stewart
Deputy Manager



Asha Caldwell
Childcare Assistant



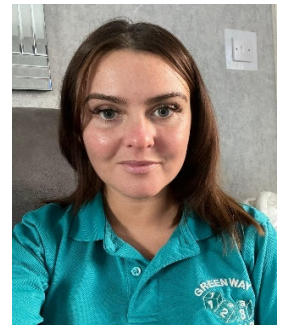
Sarah Robinson
Room leader



Suzanne Watson
Childcare Assistant



Shannon Flynn
Childcare Assistant



Nicola Maguire
Childcare Assistant



Karen Downey
Childcare Assistant



Elisha Sharpe
Childcare Assistant



Jean Ho
Room leader

Celebration Day



This year's Celebration day we all enjoyed a fun filled day at Greenway with all of our friends! We had a bouncy castle, candy floss machine, balloon modeller and so much fun activities! The children, parents and staff thoroughly enjoyed our celebration day as it allowed parents/ carers to get to know each other more and see their children enjoy spending time with their friends in crèche. Once we had fun playing we had some snacks and refreshments!

In Greenway we also decided to create a back drop for the children to receive their certificates, a small gift and art folders to show our love and support for them moving on to their next chapter in nursery.

September Inductions

In September 2023, a mixture of Sponsored DayCare (SDC), Women's Centre Childcare Fund (WCCF), Pathway spaces and Private spaces became available. With an extensive waiting list already in place we welcomed new families into our childcare department on a first come first served basis.

In terms of WCCF we offer 128 x 2hr sessions. Eligibility for these places are as follows:

- In receipt of Income Support/Unemployed and registered for JSA **and**
- Engaged in part-time (less than 16 hours per week) paid voluntary/community development work.
- Engaged in vocational or educational development or training.
- Engaged in personal development training **or**
- *Within the last 12 months, progressed into employment following a period of unemployment.*

We then offer Pathway places to parents who are low- income however would not fall under WCCF criteria.

We provide Belfast Trust with sponsored day care (SDC) places in line with our service level agreement and are contracted to hold 10x 4-hour sessions per week. During the SDC contract meeting Mary Murphy who represents BHSCT once again spoke highly of the provision and services we provide particularly from feedback from the families accessing the service.

Halloween



During October all of our childcare rooms decorated for the Halloween festivities, this included art work of spiders, pumpkins and Halloween sensory trays. We did lots of pumpkin carving and gave each child the opportunity to scoop out the inside of the pumpkins and we created a mixture of smiley and scary pumpkins! Children had the option to come into the setting on any day they attended dressed up in a costume. We had some fabulous outfits!

Santa's Grotto



At Santa's Grotto this year we invited parents, carers, all our children and siblings to come along to our grotto. In the grotto this year we had a bouncy castle, face painter, craft activities and a visit from santa and his elf!

We were very thankful to Julie Stewart who took on the persona of Santa.

Each child was provided with a selection box!



Spring Daycare & inspirational school awards 2024

We were so humbled and grateful to receive a phone call to inform us that we had been nominated for Daycare provider of the year at the Families First spring daycare & inspirational school awards 2024 for the second year in a row.

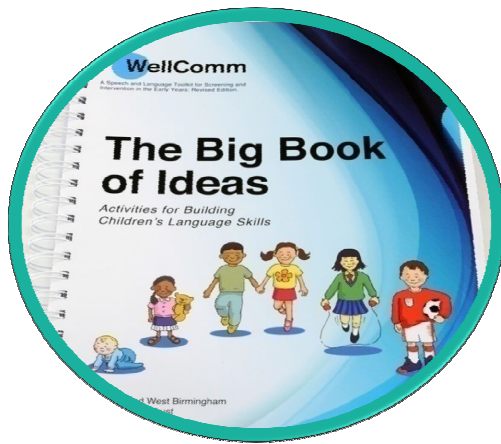
In attendance at the Titanic building, Belfast for the awards was both Childcare managers Natalie & Jodie, Deputy Manager Lynsey, Room leader Trudi, Room leader Jean Ho, Childcare assistant Elisha, Childcare Assistant Caroline Stratton, Childcare Assistant Suzanne Watson, Childcare Assistant Nicola Maguire and Bank staff Julie Stewart, We finished the night by receiving an award for the most commended 2024 and were delighted with the outcome.

Statement from Childcare managers –

“We had a fantastic time and we all really enjoyed ourselves. There were live bands and dancers as well as the awards, which were presented by Pete Snodden. It was an amazing night, especially getting to hear all the inspirational stories about other early year’s settings!”



Evidence Based Outcomes



We continued to use the Wellcomm screen and the Tapestry baseline assessment to ensure that effective planning continues to take place. The benefits of these quality indicators include having a starting point for key workers to plan from, ongoing assessment of need and most importantly early intervention and referral if required. We have put together a new form of quarterly planning which links both assessment methods so they can be cross referenced if related.

Looking back on previous assessments has been insightful and helped with future planning as well as intervention. The assessments identify the areas that the child may be meeting milestones. Staff can then go on to plan extended levels of difficulty within an activity in order to add additional challenges. The assessment is also important in planning who may need additional one to one support.

Whilst these baseline assessments are important in order to show that there is a need for the our service in terms of early intervention and support, it is important that staff do not overlook play as they key method of learning for children and creating a safe, warm and stimulating environment remain paramount to the provision we provide in order to provide the best opportunities for the children to simply play.

Information

We are currently registered for 42 childcare spaces per day however we do only facilitate 28 childcare spaces between 3 rooms operating from 8.30am-1.30pm every day. This consists of 1 baby room and 2 toddler rooms.

The majority of the spaces are made up of funding we receive from the Women's Centre Childcare Fund (WCCF). These spaces are free of charge for parents providing they can meet the criteria. We must provide 125x 2-hour sessions per week in order to meet our objective.

We receive Sponsored Day Care funding via a service level agreement with the Belfast Trust makes up 20x 2-hour sessions per week. These spaces are allocated to parents directly from the Sponsored Day Care Team. The Trust has required every single space to be used up which indicates a continued need for this service. This is particularly crucial to the work we carry out with families as it identifies the need for early intervention and support for vulnerable children and families.

The funding via The Pathway Fund takes up the next biggest quantity of space within our setting, totaling 20 child spaces per week. These sessions are provided to families who do not meet the criteria for a WCCF place however still fall within the low income bracket.

We also have our own private spaces throughout the 3 rooms.

Quality Indicators

Feedback from parents/carers and the children themselves is very important to our service and helps shape how we move our practice forward in the most effective ways. We have had numerous amounts this year which we are always grateful for.

Parents' comments below -

'I would love Greenway to win this award because they are brilliant with all the kids and the service they provide is just invaluable. My son has really progressed from he has started at Greenway. He loves going in every morning and everyone is so welcoming and friendly. I love how much the staff really care about all the children. The updates daily are so personal and really encouraging and I really love how much the staff notice how well the child is progressing and are always so proud of their development. I have seen such a massive difference in my son's social skills with other children. He has problems with his speech but the staff are really working with him and have noticed him starting to say more as well.'

'If I was unable to access the support via the centre I very much doubt I could work, and would have to go onto Universal Credit. My mental health would also suffer as I do use some of the support services in the centre as well as the childcare. I would definitely end up contacting my GP for more help, therefore putting more strain on the NHS. We were told during Covid to protect our NHS and if funding was withdrawn for our local community services this would have a very negative impact and put extra pressure on statutory services.'

'Being a single parent to children with additional needs, Greenway has gave me the opportunity to have support as well as helping me with gaining new skills and through losing my job and struggling to be re-employed due to the severity of PTSD from domestic violence. They have gave my son the chance to interact with peers and have space from me to stop him having such bad separation anxiety. The work the staff do is amazing and we would be lost without them.'

As part of our remit to the various different funders we must take part in monthly/quarterly/annual monitoring and inspections of the childcare service. Our annual inspection took place in April 2023. The report will be available to all parents/carers upon request.

- Belfast Health & Social Care Trust – via Service Level Agreement (Sponsored Day Care Team)
- Department for Communities (DfC) – via WCCF
- Health & Social Care Board – via Service Level Agreement administrated via Women's Support Network.
- Early Years-The Organisation- The Pathway Fund

The Manager, Co-Childcare Manager's, Chairperson and Training Officer also represent/ have formed relationships or are members of the following:

- Outer South and East Family support Hub
- Inner East Family Support Hub
- Housing Executive Scrutiny Board
- Surestart Management Committee
- Eastside Early Years Network
- Eastside Partnership
- Belfast Childcare Partnership
- In Kind Direct
- EBCDA Health Forum
- Inner East Surestart
- Early Years- The Organisation
- NICVA
- Cregagh Interagency Forum
- Play Resource

Moving Forward

Moving forward we aim to grow, develop and continue to deliver a high quality childcare service within the Cregagh estate at the heart of east Belfast. We continue to meet new children and new families daily and couldn't be happier to be able to support the local community.

We are hoping to open our 4th childcare room in the near future allowing us to provide daily childcare to our full potential, in doing this we look forward to welcoming new staff members, more children and more families to join us at Greenway Childcare.



Funders and Contributors

- Department for Communities (DfC) - via Women's Centre Childcare Fund (WCCF)
- Belfast Health & Social Care Trust - via Service Level Agreement for Sponsored Day Care
- Belfast Childcare Partnership - IT and Outdoor Equipment Grant
- The Pathway Fund - Early Years The Organisation



Greenway Women's Centre Services

The centre also offers a number of other services which benefit women and their families.

- Family Support Service
- Training & Education Programme
- Volunteering Opportunities
- Student Placement Opportunities
- Employment Opportunities
- Advice, signposting, referral and support
- Childcare
- Counselling Service

Further information can be obtained by visiting our website www.greenwaywomenscentre.org, find us on Facebook, pick up a leaflet onsite or talk to one of the staff.

- Lindsay Cooper - Centre Manager
- Mae McQuillan - Director
- Liz Oslon - Chairperson/Registered Person
- Helen Smyth - Training & Education
- Jodie Wilson & Natalie Horrocks - Childcare Managers